

60 on Broadway

LUXURY CONDOS IN THE HEART OF ORANGEVILLE





60 on Broadway

LUXURY CONDOS IN THE HEART OF ORANGEVILLE

TRADITION MEETS MODERN

60 on Broadway Development Corporation invites you to share in the new exclusive condominium lifestyle experience located in downtown Orangeville.

LOBBY

Our design team has created a sophisticated blend of traditional and contemporary decor, expertly balancing warmth and intimacy to produce a truly inviting atmosphere.



SUITE

Welcome to your new home, showcasing a masterful blend of design and functionality. Every element has been carefully considered to create a unique and stylish living space that elegantly contours to form and function.



PATIO

60 on Broadway presents a premium amenity area, designed to bring a resort-style experience to the downtown community. Residents can indulge in a tranquil backyard atmosphere, perfectly balanced with the vibrancy of city living.





Luxury Condos in the Heart of Orangeville

Stylish Living Space



Premium Outdoor Amenity Area



Luxurious Urban Lifestyle



GYM & FITNESS ROOM

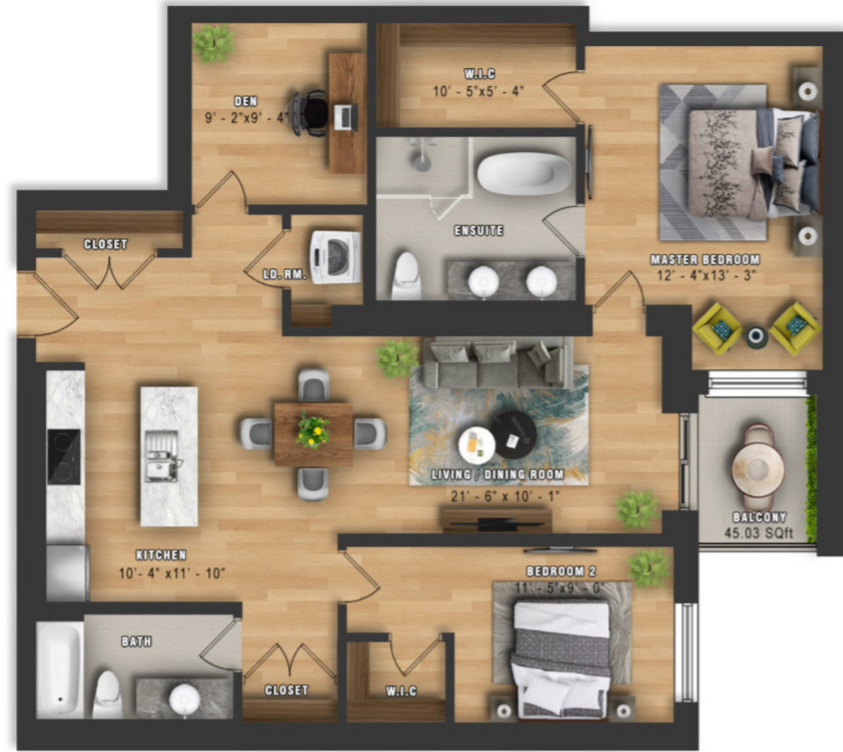
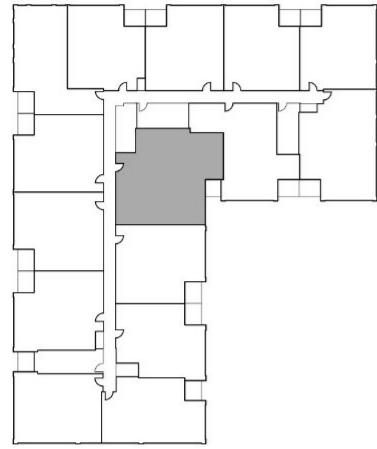


COWORKING SPACE



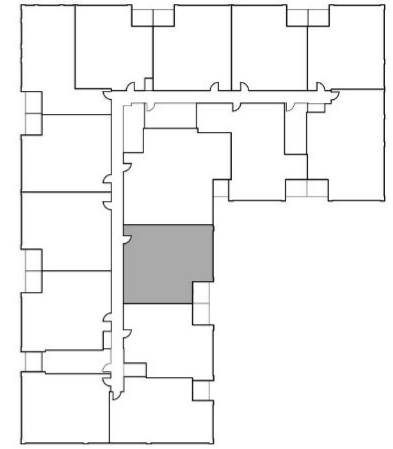
BROADWAY SUITE A
1345 SQUARE FT.

FLOOR 2-4



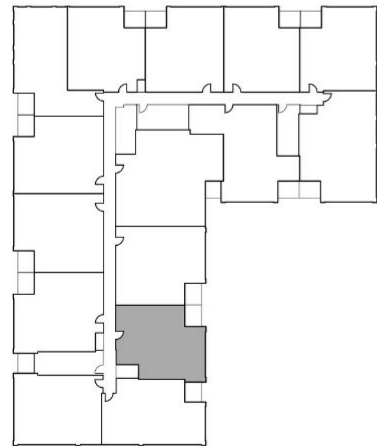
BROADWAY SUITE B
895 SQUARE FT.

FLOOR 2-4



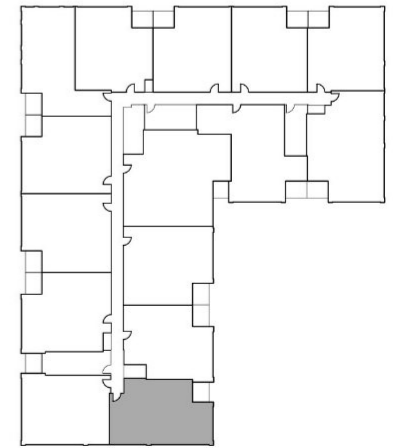
BROADWAY SUITE C
995 SQUARE FT.

FLOOR 2-4



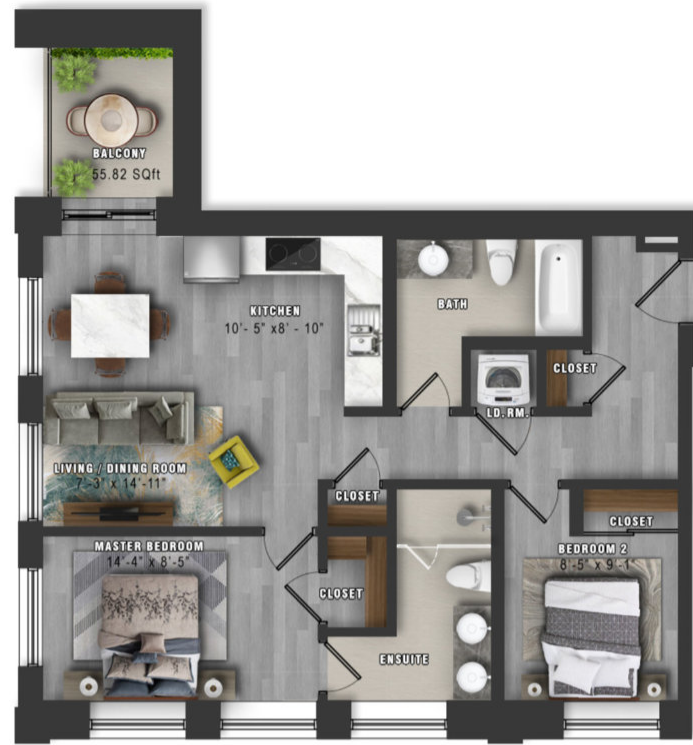
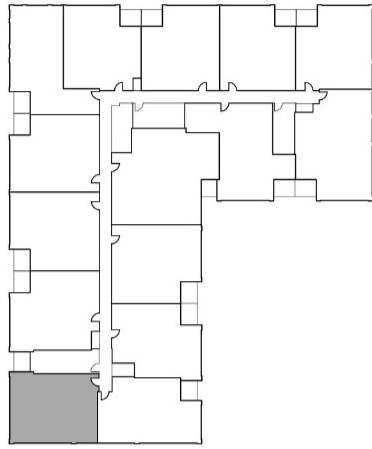
BROADWAY SUITE D
925 SQUARE FT.

FLOOR 2-4



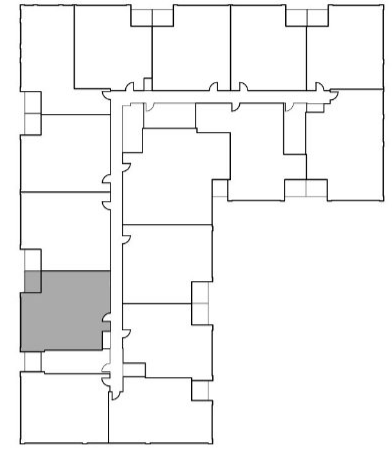
BROADWAY SUITE E
910 SQUARE FT.

FLOOR 2-4



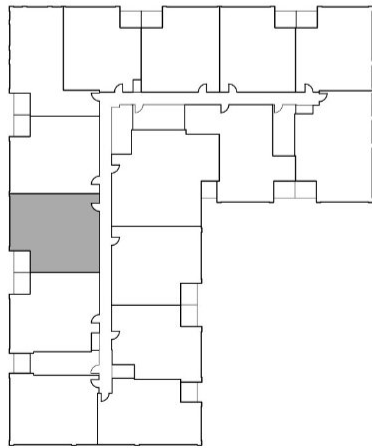
BROADWAY SUITE F
985 SQUARE FT.

FLOOR 2-4



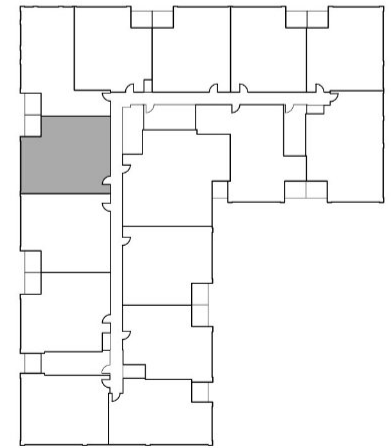
BROADWAY SUITE G
1000 SQUARE FT.

FLOOR 2-4



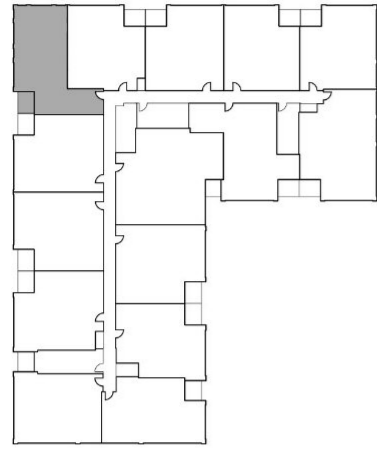
BROADWAY SUITE H
980 SQUARE FT.

FLOOR 2-4



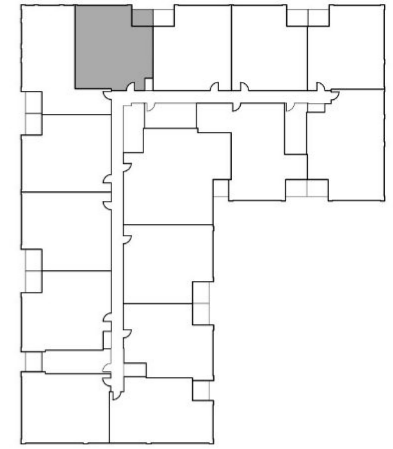
BROADWAY SUITE I
955 SQUARE FT.

FLOOR 2-4



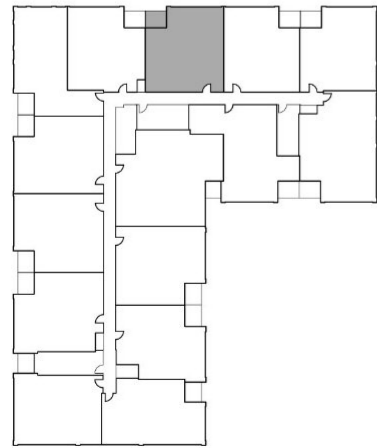
BROADWAY SUITE J
905 SQUARE FT.

FLOOR 2-4



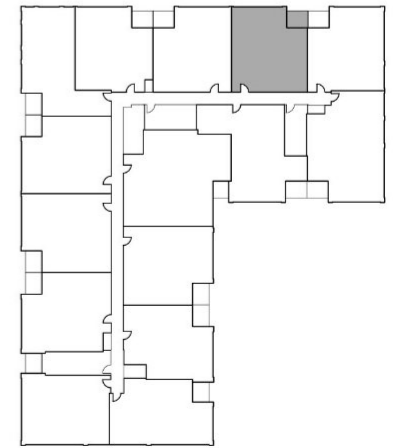
BROADWAY SUITE K
940 SQUARE FT.

FLOOR 2-4



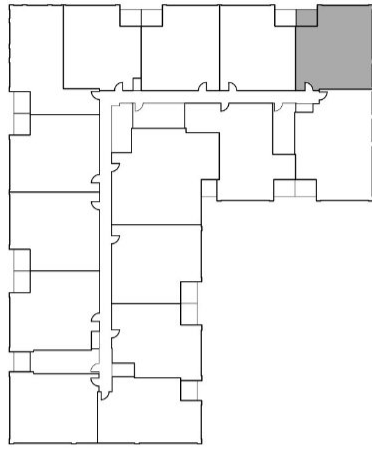
BROADWAY SUITE L
910 SQUARE FT.

FLOOR 2-4



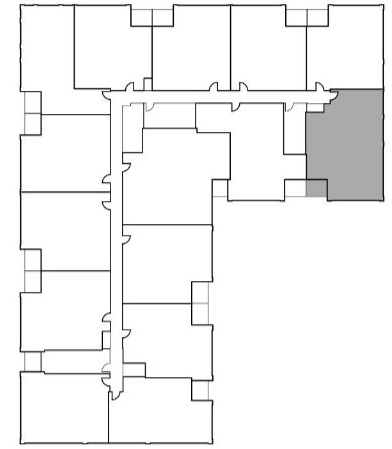
BROADWAY SUITE M
905 SQUARE FT.

FLOOR 2-4



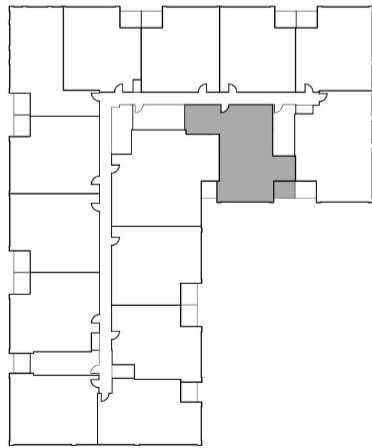
BROADWAY SUITE N
1155 SQUARE FT.

FLOOR 2-4



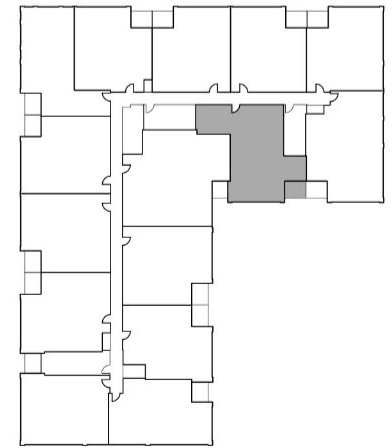
BROADWAY SUITE O
1030 SQUARE FT.

FLOOR 2-3



BROADWAY SUITE P
950 SQUARE FT.

FLOOR 4



BROADWAY PENTHOUSE SUITE A
1360 SQUARE FT.

FLOOR 5



BROADWAY PENTHOUSE SUITE B
995 SQUARE FT.

FLOOR 5



BROADWAY PENTHOUSE SUITE C
895 SQUARE FT.

FLOOR 5



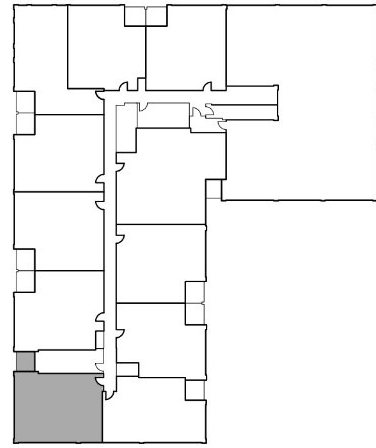
BROADWAY PENTHOUSE SUITE D
925 SQUARE FT.

FLOOR 5



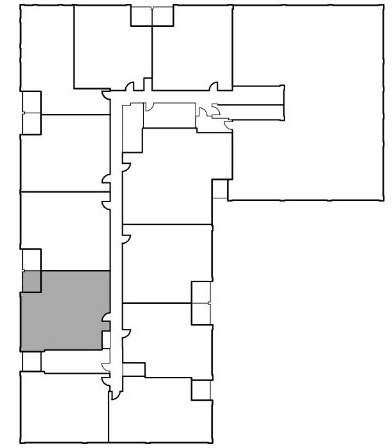
BROADWAY PENTHOUSE SUITE E
930 SQUARE FT.

FLOOR 5



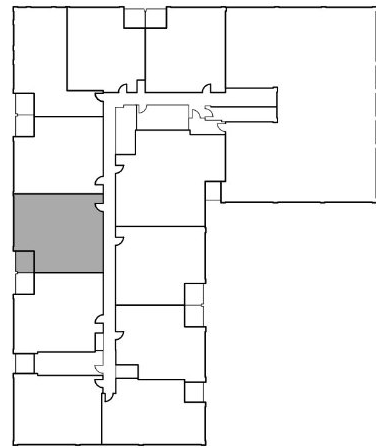
BROADWAY PENTHOUSE SUITE F
985 SQUARE FT.

FLOOR 5



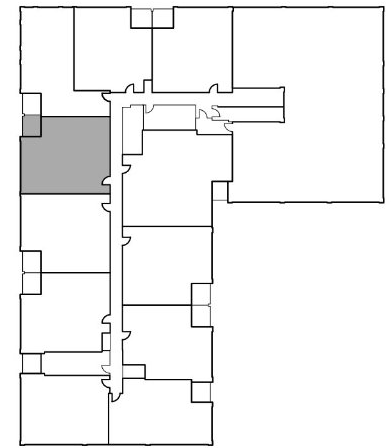
BROADWAY PENTHOUSE SUITE G
1000 SQUARE FT.

FLOOR 5



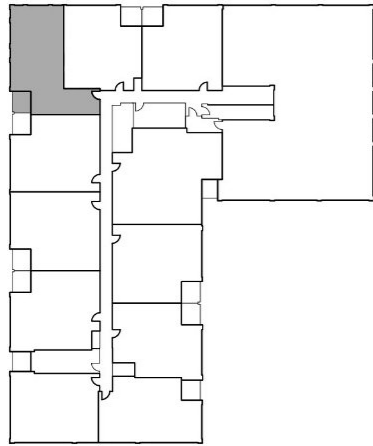
BROADWAY PENTHOUSE SUITE H
980 SQUARE FT.

FLOOR 5



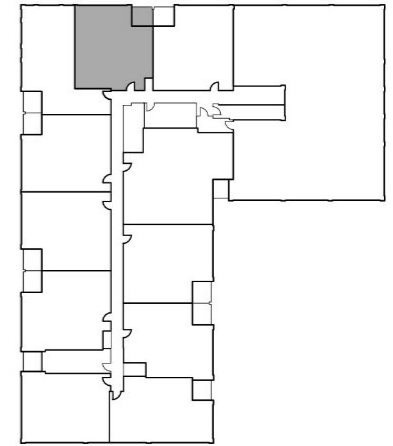
BROADWAY PENTHOUSE SUITE I
910 SQUARE FT.

FLOOR 5



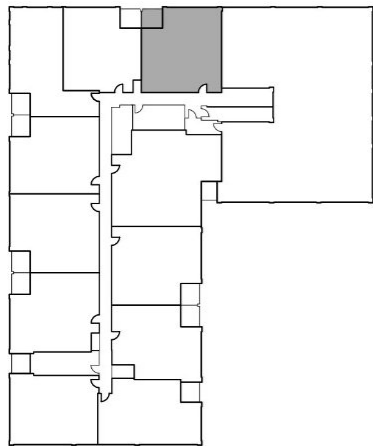
BROADWAY PENTHOUSE SUITE J
985 SQUARE FT.

FLOOR 5

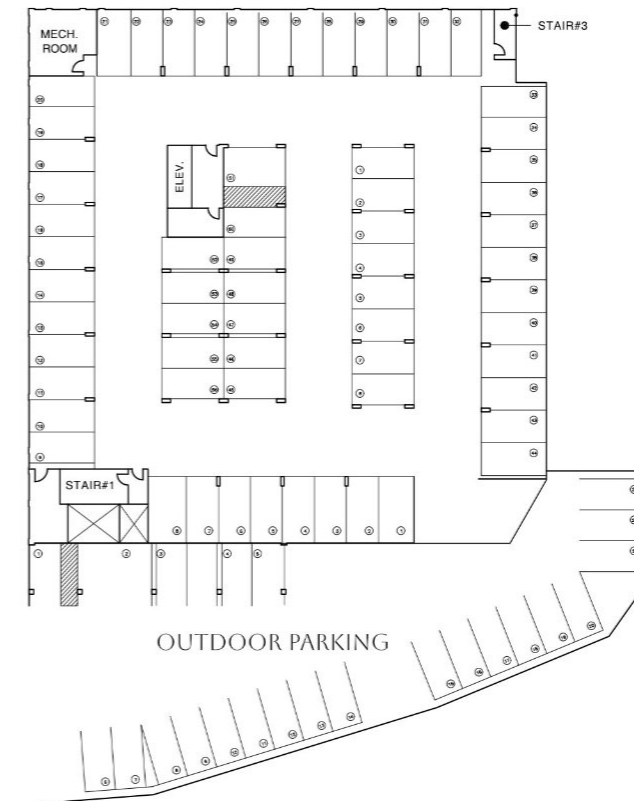


BROADWAY PENTHOUSE SUITE K
965 SQUARE FT.

FLOOR 5



BROADWAY UNDERGROUND PARKING

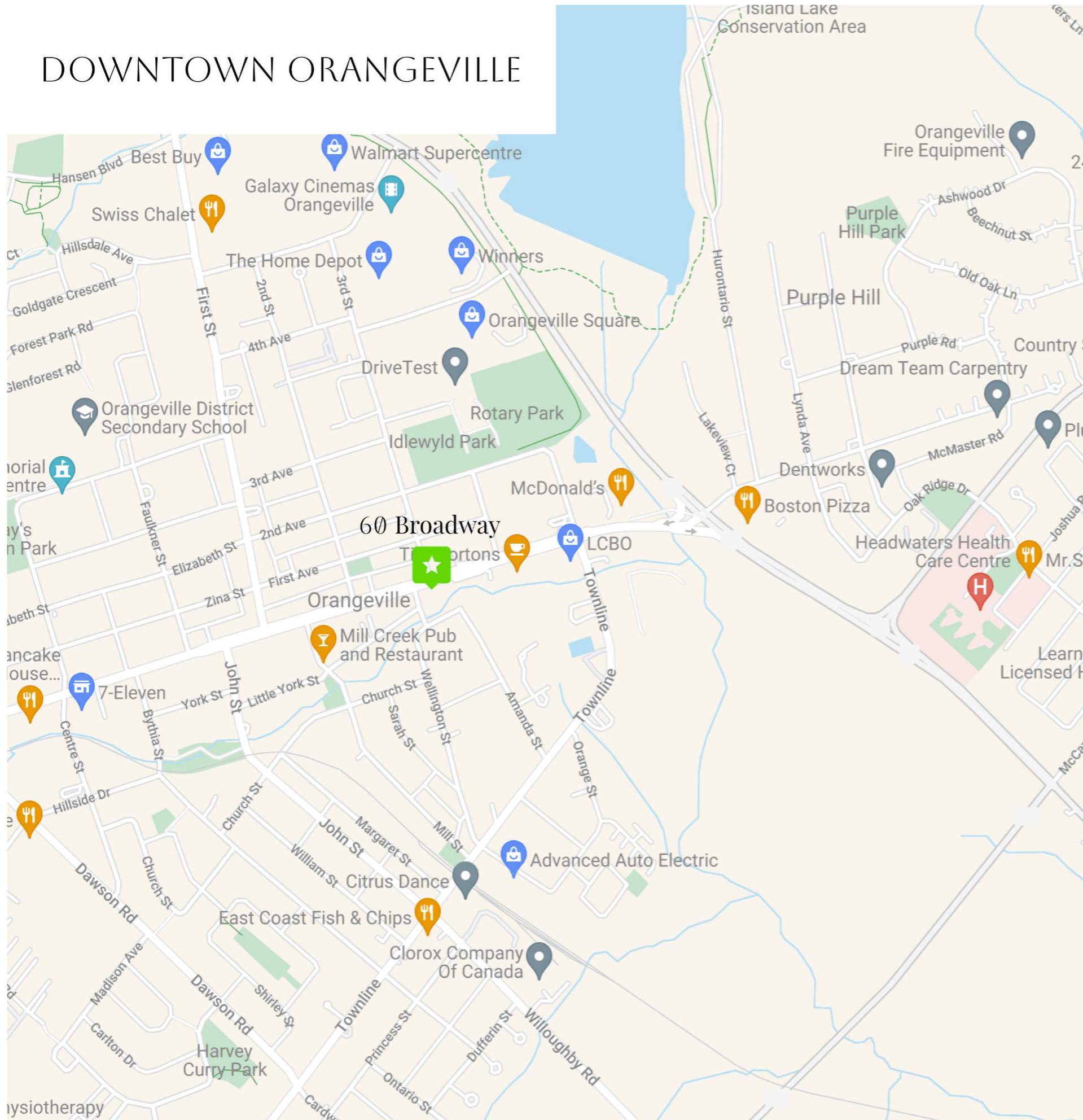




Luxury Condos in the Heart of Orangeville



DOWNTOWN ORANGEVILLE



MINUTES TO:

- Headwaters Health Care Centre
- Greystones Restaurant & Lounge
- Revival 1863
- Rotary Park
- Idlewyld Park
- Orangeville District Secondary School
- Mill Creek Pub and Restaurant
- East Coast Fish & Chips
- Pancake House
- Galaxy Cinemas Orangeville
- Metro Grocery Store
- Purple Hill Park
- Harvey Curry-Park

...And Endless Surrounding Amenities!

EXTERIOR CONSTRUCTION

- ❖ Framed exterior walls with advanced insulation and traditional masonry façade.
- ❖ Pre-cast floor with super structure concrete bearing walls.
- ❖ Upgraded sound transmission rating for quieter living space.
- ❖ Historical exterior finishes in keeping with Orangeville heritage standards.
- ❖ Classic clay brick exterior accompanied by architectural cornices with accent finish.
- ❖ Quality thermal windows consisting of low E argon gas and screens on operating windows and doors.
- ❖ Fire rated wood entry doors including smart technology lock.
- ❖ Automatic overhead garage door to underground parking.
- ❖ Private balcony standard feature in every unit.

INTERIOR FINISHES & FEATURES

- ❖ Paint grade, wood panelled doors with trim and brushed chrome finish hardware.
- ❖ Timeless painted wood trim.
- ❖ Melamine one shelf and closet pole standard in all bedroom and hallway closets.
- ❖ Smooth drywall ceilings throughout painted standard white.
- ❖ Decorator white painted interior walls and trim.
- ❖ Porcelain tile finish in washrooms combined with woodgrain laminate flooring choice from builder's standard samples.
- ❖ Individual light fixtures installed throughout each unit and capped light in dining room.
- ❖ Pre-wired internet and cable for bedrooms and living room.
- ❖ Smoke detectors with strobe light and sprinklers installed in all bedrooms and hallways combined with carbon monoxide detectors.

AMENITIES

- ❖ Contemporary inviting entrance with fireplace and conversation area.
- ❖ Mailbox conveniently located in lobby.
- ❖ Innovative automated parcel delivery space.
- ❖ Two elevators strategically located behind privacy screen.
- ❖ Shared accommodation workspace/office areas combined with boardroom/executive meeting rooms for professional residents.
- ❖ Pet washing/grooming room located off main lobby and pet friendly playground area.
- ❖ Spacious party room featuring bar area and prep kitchen.
- ❖ Modern fitness area containing work-out equipment and yoga room.
- ❖ Outdoor amenity area detailing cozy seating and fireplace, BBQs and prep counters.
- ❖ Individual refuse chute on every floor.
- ❖ One parking spot per unit.

KITCHEN FEATURES

- ❖ Modern kitchen design.
- ❖ Stainless steel double undermount sinks.
- ❖ Single lever chrome faucet with pulldown sprayer.
- ❖ Exterior vented hood fan over stove.
- ❖ 3-piece stainless steel appliance package included.
- ❖ Ceramic tile backsplash choice from builder's standard samples.
- ❖ Quartz countertops choice from builder's standard samples.

WASHROOM FEATURES

- ❖ Vanities in all washrooms choice from builder's standard samples.
- ❖ Shower and tub (where applicable) combined with posi temp valves.
- ❖ Exterior vented exhaust fans in all washrooms.
- ❖ Porcelain White plumbing fixtures.
- ❖ Chrome washroom accessories.
- ❖ One-piece acrylic tub in main washroom as per plan.
- ❖ Standard mirrors over washroom vanities.
- ❖ 12" x 24" ceramic floors choice from builder's standard samples.

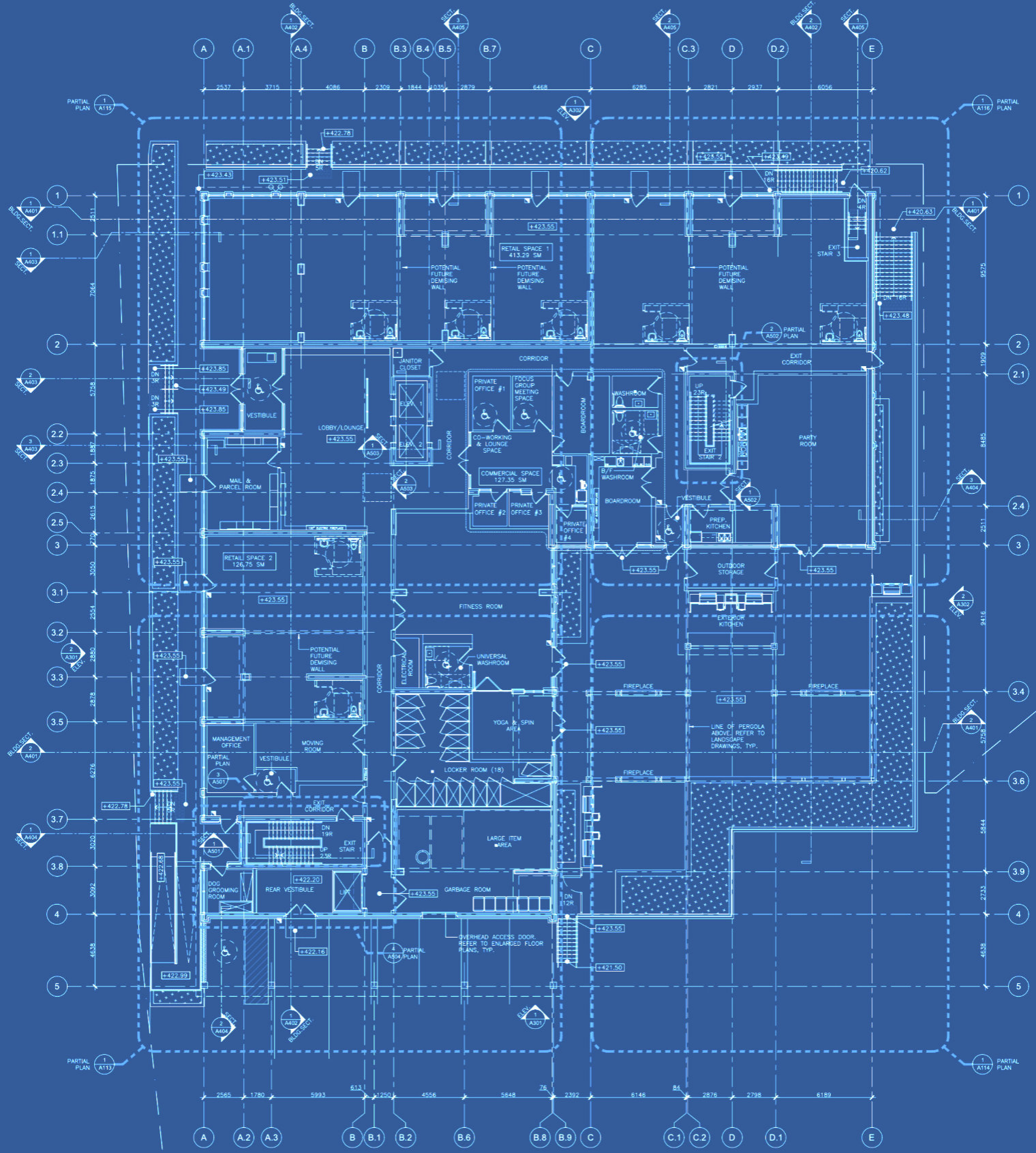
CONVENIENCE & HOME COMFORT

- ❖ State of the art heat pump in addition to central air system in each individual suite.
- ❖ Washer and Dryer included in standard appliance package.
- ❖ LED light fixtures.
- ❖ Decora plugs and light switches.
- ❖ Fire alarm system.
- ❖ Fire sprinkler system in all units and building.
- ❖ Wireless key entry access control throughout building and suite entry.

Upgrade packages will be made available at time of colour selection.

All colours and finishes shall be selected from the builder's standard selections. Prices and specifications are subject to change without notice. All areas and stated room dimensions are approximate. Floor area measured in accordance with the Home Construction Regulatory Authority Directive updated on March 22, 2021. Actual living area may vary from floor area stated. Builder may substitute materials for those provided in the plans and specifications provided such materials are of quality equal to or better than the material provided for in the plans and specifications. The determination of whether or not materials are of equal or greater value shall be made by the Vendor's architect whose determination shall be final and binding. Decorative and upgraded items displayed in the sales office are for display purposes only and are not included in the purchase price. E. & O.E.

GROUND FLOOR | SITE PLAN



60 on Broadway

LUXURY CONDOS IN THE HEART OF ORANGEVILLE



The layout, location and/or configuration of any proposed building(s) and/or unit(s) depicted on any site plan, marketing materials, signs, artist renderings or scale model (including but not limited to the existence of any amenities, elevators, stairwells, electrical closets, air shafts, garbage chutes and fire hose/extinguisher cabinets) are for illustration purposes only and subject to change, in the Vendor's sole and absolute discretion without notice, and unit purchasers shall have no claim or cause of action against the vendor, its directors, officers, employees, agents and/or consultants as a consequence of same.